

ROWAN COUNTY AMBULANCE GARAGE MOREHEAD, KENTUCKY

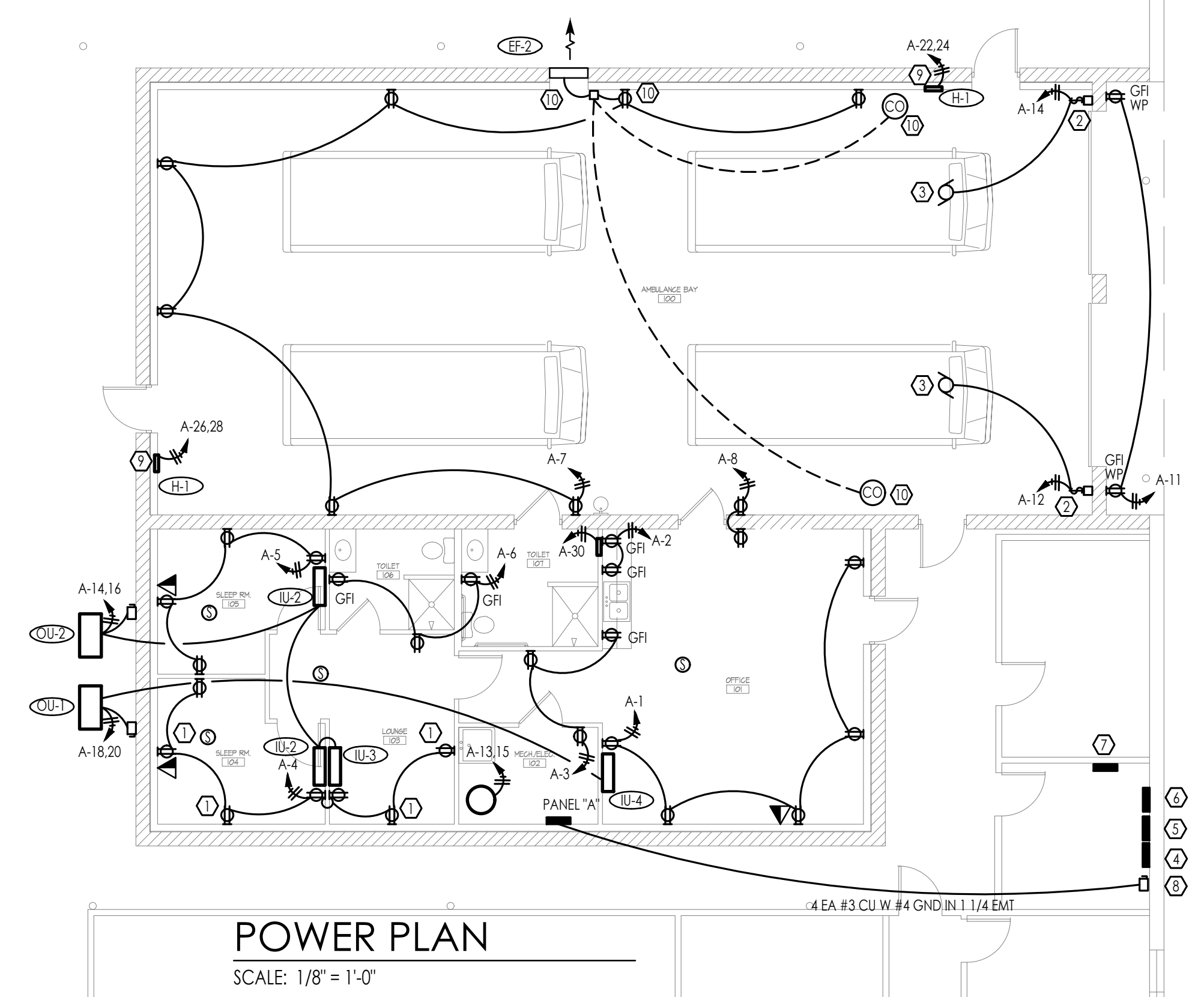
DATE	REVISION	BY

PROJECT NO. 2306	DESIGNED BY TBM
DRAWN BY TBM	CHECKED BY TBM
REVIEWED BY	DATE APRIL 2020
SCALE AS NOTED	

Engineers
Architects
Planners

624 Wellington Way
Lexington, KY 40503
www.mseinc.com

Phone: (859) 223-5684
Fax: (859) 223-2607



POWER PLAN
SCALE: 1/8" = 1'-0"

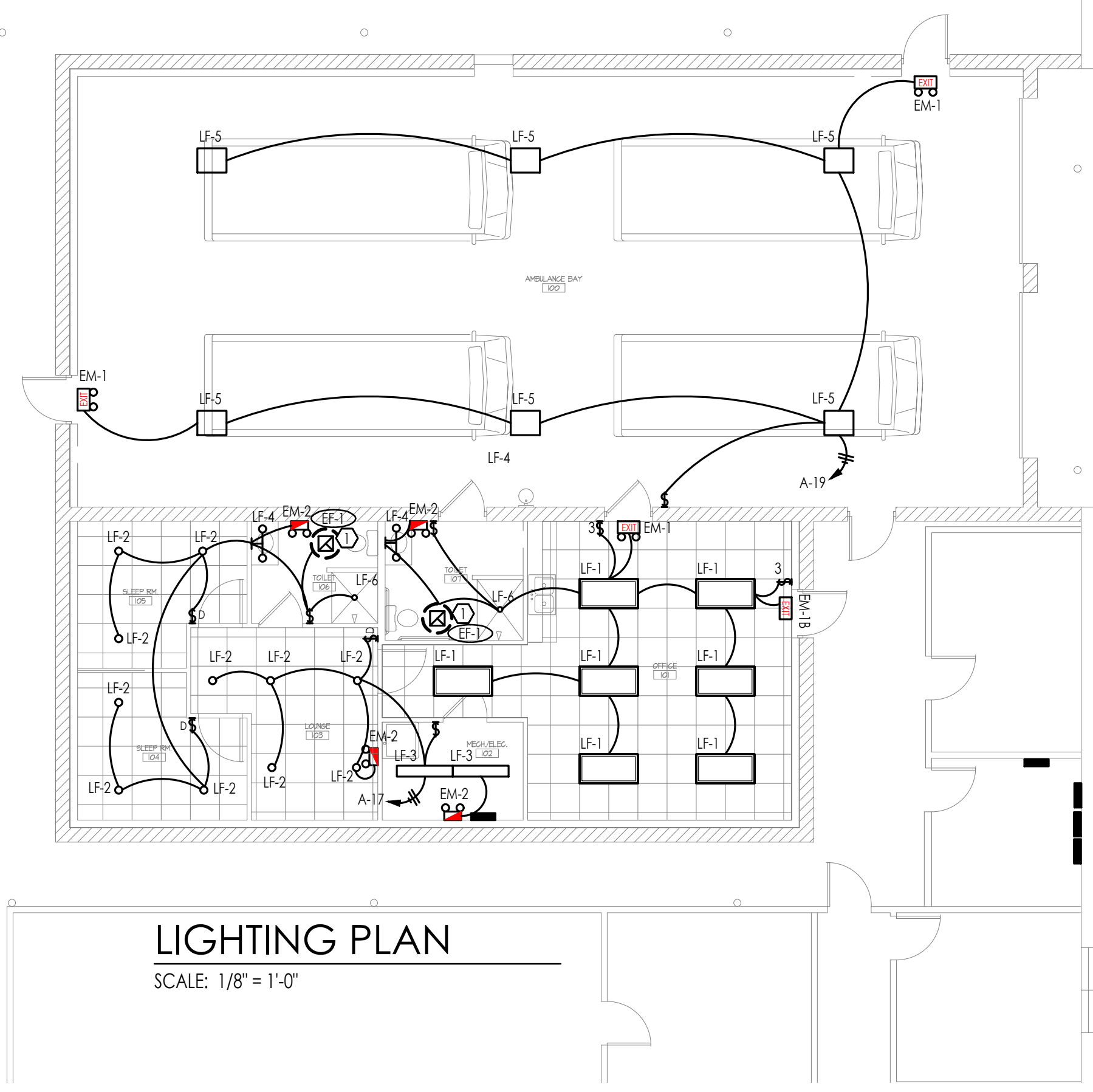
PANEL "A"												
VOLTAGE: 120/240 PHASE: 3Ø WIRE: 4 MAINS: 225 MAIN CKT BRKR: MLO												
TYPE: SQUARE D, NQDD MOUNT: RECESSED LOCATION: MECH. ROOM AIC: 12,000												
CKT#	CB / POLE	WIRE SIZE	LOAD SERVED	KVA	LOAD			KVA	LOAD SERVED	WIRE SIZE	CB / POLE	CKT#
					A	B	C					
1	2011	12	RECEP., RM 101	1.0	2.5			1.5	RECEP., RM 101		2011	2
3	2011	12	RECEP., RM 101,102	0.8		2.0		1.4	RECEP., RM 103, 104		2011	4
5	2011	12	RECEP., RM 105	0.8			1.4	0.6	RECEP., RM 108,107		2011	6
7	2011	12	REC., AMBULANCE BAY	1.4	1.8			0.4	REC., AMBULANCE BAY		2011	8
9	2011	12	NOT USED	1.0		2.0		1.0	OVERHEAD DOOR		2011	10
11	2011	12	OUTDOOR RECEP.	0.8				1.8	OVERHEAD DOOR		2011	12
13												14
15	30/2	-	WATER HEATER	2.25	3.55			1.3	OU-1			16
				2.25		3.55						18
17	2011	12	LIGHTING	1.0			2.0	1.0	OU-2			20
19	2011	12	HIGH BAY LIGHTING	1.0	2.0			1.0				22
21	2011	12	SPARE	0.0		1.5		1.5	WALL HEATER		2012	24
23	2011	12	SPARE	0.0			1.5	1.5	WALL HEATER		2012	26
25	2011	12	SPARE	0.0	1.5			1.5	WALL HEATER		2011	28
27	2011	12	SPARE	0.0		1.5		1.5	ELECTRIC HEATER		2011	30
29	2011	12	SPARE	0.0			1.5	1.5	SPARE		2011	32
31	2011	12	SPARE	0.0	0.0			0.0	SPARE		2011	34
33	2011	12	SPARE	0.0		0.0		0.0	SPARE		2011	36
35	2011	12	SPARE	0.0			0.0	0.0	SPARE		2011	38
37	2011	12	SPARE	0.0	0.0			0.0	SPARE		2011	40
39	2011	12	SPARE	0.0		0.0		0.0	SPARE		2011	
TOTAL CONNECTED				30.1	KVA	11.35 10.55 8.2						

SHEET NOTES

- SURFACE MOUNT WITH EXPOSED CONDUIT.
- DOOR OPERATOR
- GARAGE DOOR OPENER
- EXISTING MAIN DISCONNECT.
- EXISTING PANEL LP-2.
- EXISTING PANEL LP-1
- EXISTING 100 AMP SUB PANEL FED FROM LP2
- FEED PANEL "A" WITH 125 AMP FUSED DISCONNECT, CONNECTING IN EXISTING PANEL MARKED MDP - OR REARRANGE CIRCUITS IN PANEL LP-1 OR LP-2 SO THAT A THREE PHASE 12K AMP BREAKER CAN BE INSTALLED TO FEED PANEL "A."
- FLUSH MOUNT 3 KW, 208 VOLT ELECTRIC HEATER WITH BUILT IN DISCONNECT AND THERMOSTAT.
- INSTALL TWO CO DETECTORS, WITH ALARMS, SET TO TURN EF-2 ON WHEN CO LEVELS REACH 50 PPM., OFF, AT 25 PPM. INSTALL HAND OFF AUTO SWITCH TO OPERATE FAN IN A MANUAL MANNER.

SHEET NOTES

- CIRCUIT EXHAUST FAN WITH LIGHTS.
- ROUTE THROUGH TIME CLOCK, PROVIDE TIME CLOCK AND/OR PHOTOCELL CONTROL IN MECH. ROOM. PROVIDE 3/4" CONDUIT STUB OUT FOR PARKING LOT / SITE LIGHTING.



LIGHTING PLAN
SCALE: 1/8" = 1'-0"

LIGHTING FIXTURE SCHEDULE					
TYPE	MANUFACTURER & MODEL #	DESCRIPTION	LAMPS	WATTS	
LF-1	COLUMBIA CFP24-55/41/3440	RECESSED 2X4 EDGE UT SURFACE MOUNT FLAT PANEL LED WITH SURFACE MOUNT KIT. 5033 LUMENS, 40.3 WATTS, 4000K, COLOR TEMPERATURE.	LED	40.3 W	
LF-2	PRESTOUTE DBMGL-6BA-10L-30K-WH	6 INCH LED DOWN-LIGHT, 3000K, COLOR TEMPERATURE, 80 CRI, WHITE TRIM, 1000 LUMENS, 11 WATTS, DIMMING CAPACITY TO 10%.	LED	22.5 W	
LF-3	LITHONIA LIGHTING MNSL L 48 2LL MVOLT GDN 40K-80CRI M6	CFP 11x4, COLOR TEMPERATURE: 4000 K, LIGHT OUTPUT: 4,102 LM, WATTAGE: 39 W, MOUNTING TYPE: SURFACE DRIVER TYPE: 0-10V DIMMING, VOLTAGE RATING: 120-277 VAC.	LED	39 W	
LF-4	HAMPTON BAY EGM1392A-3BN	2 LAMP ECONOMY WALLS SCONCE WITH LED LAMPS	N/A	N/A	
LF-5	ORION LIGHTING HHS1L1DUNVND840LAFGHWSF	HARRIS HHS1L HIGH BAY LED LIGHT, 2-FOOT I-FRAME ALUMINUM BODY, ACRYLIC FROSTED LENS, 4000K COLOR TEMPERATURE, 20,000 LUMENS, 123 WATTS.	LED	123 W	
LF-6	COMMERCIAL ELECTRIC HBR 2000BA CER 432G2WH	4 INCH LED CAN LIGHT WITH NON-AC HOUSING AND GASKETED SHOWER TRIM. PROVIDE WITH 7 INCH 40 WATT LED BULB, WARM LIGHT.	LED	8 W	
WP	HUBBELL OUTDOOR LNC3-24L3K-105-4	MEDIUM LNC3 LITEPAK, WALLPACK LIGHT, C-70-CRI, 7000 LUMENS, 82.8 WATTS.	LED	82.8 W	
EM-1A	COMPASS CCRRCSD	LED COMBINATION EXIT/EMERGENCY LIGHT, WHITE FINISH, UNIVERSAL FACE, RED LETTERS, SELF-TEST/SELF-DIAGNOSTICS, NiMH BATTERY, REMOTE CAPACITY, CEC T20 COMPLIANT, DAMP LOCATION RATED, FULLY ADJUSTABLE HEATS, DUAL VOLTAGE INPUT, 2 YEAR WARRANTY	LED	N/A	
EM-2	COMPASS CUZ-COR	LED WHITE THERMOPLASTIC HOUSING, DUAL-HEAD EMERGENCY LIGHT, DAMP LOCATION LISTED, 10 YEAR LIFE	LED	N/A	
EM-3	COMPASS CORD	LED REMOTE EGRESS HEAD, DOUBLE HEADS RATED FOR OUTDOOR INSTALLATION, 10 YEAR LIFE	LED	N/A	
EM-1B	COMPASS CERRC-CR-WGLX	LED EXIT SIGN WITH THERMOPLASTIC HOUSING, UNIVERSAL FACE, RED LETTERS, REMOTE CAPACITY, 90 MINUTE OPERATION.	LED	N/A	

CONSULTING ENGINEERS
HVAC - PLUMBING - ELECTRICAL

106 WESTLAND DRIVE
LEXINGTON, KENTUCKY 40504
PHONE (859) 255-4457